



we protect digital worlds

NOD32

antivirus system

**NOD32 Server Edition
for Lotus Domino**

Installation

Copyright © Eset, spol. s r. o.
All rights reserved.

No part of this document may be reproduced or transmitted in any form or by any means electronic or mechanical, for any purpose without the express written permission of Eset, spol. s r. o. Information in this document is subject to change without prior notice.

Certain names of program products and company names used in this document might be registered trademarks or trademarks owned by other entities.

Eset, NOD32 and AMON are trademarks of Eset, spol. s r. o. Microsoft and Windows are registered trademarks of Microsoft Corporation.

Eset, spol. s r. o.
Svoradova 1, 811 03 Bratislava, Slovak Republic

<http://www.eset.sk/en>

Technical Support Worldwide:

<http://www.eset.com/support>

Technical Support for Europe:

<http://www.eset.sk/en/support>

1. Introduction

NOD32 for Domino (AMFE) is a Lotus Domino server addin, built upon the state-of-the-art NOD32 scanning engine. It was designed to protect e-mail communication from virus infiltrations propagating by e-mail, and to lower the e-mail traffic by filtering out undesired e-mail attachments.

NOD32 for Domino utilizes the same engine as NOD32 2.5, including archive scanning, advanced heuristics, adware/spyware/riskware detection, etc.

2. Quick Installation

System requirements

- Windows NT 4.0 / 2000 / 2003 server
- NOD32 for Windows (v. 2.51.20 and higher)
- IBM Lotus Domino R5 (v. 5.0.9a and higher)
- IBM Lotus Domino R6
- IBM Lotus Domino R6.5
- IBM Lotus Domino R7

Before you install

Prior to installing NOD32 for Domino, make sure that NOD32 2.5 is already installed on the Lotus Domino server.

NOD32 2.5 as well as NOD32 for Lotus Domino is available for download from Eset's website <http://www.eset.com/download/> using your username and password. For more information about installing NOD32, read the quick installation guide available at <http://www.eset.com/download/manual.htm>.

Before you start the installation (uninstallation) of NOD32 for Domino, quit the Lotus Domino Server.

Installing NOD32 for Domino

Installation process:

1. extract the installation package downloaded from Eset's website or shipped on a CD
2. navigate to the temporary folder, and run the appropriate setup file for your oper. system:
 - *setup2k.exe* – for Windows 2000 / 2003 server
 - *setupnt.exe* – for Windows NT server
3. the installer will search for the current Lotus Domino notes.ini file and will offer to use the first file found. After the file has been found, confirm it by typing *y* and pressing *ENTER* to go ahead with the installation (img. 1)
4. if the found notes.ini file is not the right file, then type *n* and press *ENTER* to continue
5. type the path to the correct *notes.ini* and press *ENTER* (img. 2)
6. enter the name of a new subdirectory in the Lotus Domino data folder where you want the file to be created, and where the NOD32 for Domino databases will be copied to, and press *ENTER* (img. 3)
7. wait for the installation to complete
8. after the installation has completed, press any key to exit the installation dialog (img. 4)

After installation, before Lotus Domino server startup, enter a license key for NOD32 Server Edition for Lotus Domino product to NOD32 Control Center (NOD32 Control Center > NOD32 system tools > Settings > License Keys). The license key is sent to your contact address together

(img. 1)

```
C:\temp\test\install\noddomena>setup2k.exe
Found Domino installation and corresponding notes.ini file at this location:
C:\Program Files\Lotus\Domino\notes.ini
Is this correct ? <Y/N>
```

(img. 2)

```
C:\temp\test\install\noddomena>setup2k.exe
Found Domino installation and corresponding notes.ini file at this location:
C:\Program Files\Lotus\Domino\notes.ini
Is this correct ? <Y/N> n

Enter notes.ini (with full path) to be used: D:\Lotus\Domino\notes.ini
```

(img. 3)

```
C:\temp\test\install\noddomena>setup2k.exe
Found Domino installation and corresponding notes.ini file at this location:
C:\Program Files\Lotus\Domino\notes.ini
Is this correct ? <Y/N> y

Enter subdirectory in Domino data directory where AMFE database will be placed: nod32
```

(img. 4)

```
C:\temp\test\install\noddomena>setup2k.exe
Found Domino installation and corresponding notes.ini file at this location:
C:\Program Files\Lotus\Domino\notes.ini
Is this correct ? (Y/N) y

Enter subdirectory in Domino data directory where AMFE database will be placed: nod32
Please wait while AMFE is being installed...
AMFE installed. Press any key to exit
```

(img. 5)

```
C:\temp\test\install\noddomena>setup2k.exe
Found Domino installation and corresponding notes.ini file at this location:
C:\Program Files\Lotus\Domino\notes.ini
Is this correct ? (Y/N) y

AMFE already installed. Do you want to uninstall it ? (Y/N)
```

(img. 6)

```
vm2k3s/domino07: Lotus Domino Server
Lotus Domino (r) Server, Release 7.0, August 18, 2005
Copyright (c) IBM Corporation 1987, 2005. All Rights Reserved.
11/14/2005 10:39:10 AM AMFE v1.01.233 loading...
```

with authorization data by ESET spol. s r. o. After entering the license key, start Lotus Domino server. At the server startup, NOD32 for Domino (AMFE) will be loaded. (img. 6)

After a successful installation, the following files will be created in the specified folder (i.e. in the Lotus Domino data subfolder):

- AMFE help.nsf
- AMFE log.nsf
- AMFE Mail Review.nsf
- AMFE Quarantine.nsf
- AMFE Setup.nsf

Uninstalling NOD32 for Domino

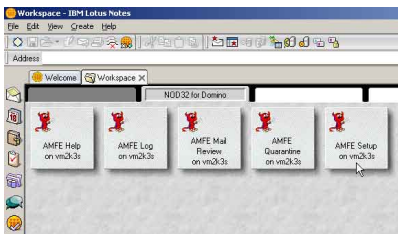
The steps 1 to 5 are identical with those for installation.

6. after the installer has recognized a previous installation of NOD32 for Domino, it will offer you to uninstall it from the computer. Type *y* and press *ENTER* (img. 5)
7. wait for the uninstallation to complete
8. after the uninstallation has completed, press any key to close the installation dialog

3. Setup

NOD32 for Domino Setup (AMFE Setup)

To configure NOD32 for Domino, open Domino Administrator or your Lotus Notes client (Workspace).



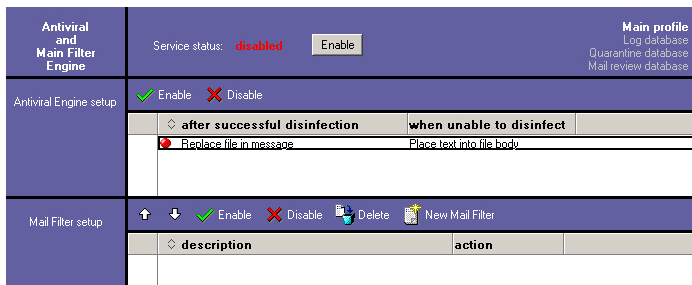
To launch NOD32 for Domino, click the Enable button in the upper part of the AMFE Setup (Service status:). After NOD32 for Domino starts, Lotus Domino Server must be restarted (img. 7).

The settings are divided into two groups:

Antiviral Engine Setup:

To display the Engine settings, double click on the setup document. By default, the settings are displayed in view mode. To edit the settings, click the Edit button.

(img. 7)



Settings:

- **Status (Enabled/Disabled)** – toggles the checking on/off
- **Text to append to bottom of message:** - the text message appended at the end of infected e-mails
Setting up actions that are applied after successful or unsuccessful cleaning:
- **Replace file in message** – cleans infected files (cleanable)
- **Delete file from message** – deletes infected files (regardless of whether they are cleanable or non-cleanable)
- **Place text into file body** – replaces the body of infected files with a text message (the text of the e-mail will be replaced with the text you enter here)
- **Make log entry** –enables logging
- **Append virus info to message** – adds information about detected threat to email
- **Place infected file into quarantine database** – moves infected files to quarantine (img. 8)

Mail Filter Setup:

NOD32 for Domino enables e-mail filtering based on specified criteria. The filtering can be accomplished by applying various rules. By adjusting the filters the proper way, it is possible to filter out spam effectively.

To create a new filter, click the New Mail Filter button. To assign different priorities to the filters, move them up and down using the arrow keys. The higher a filter is listed, the higher priority it has. To switch a filter on/off, select a filter and click the Enable / Disable button.

The Filter Settings are displayed after double-clicking the filter. By default, the settings are displayed in view mode. To edit them, click the Edit Button.

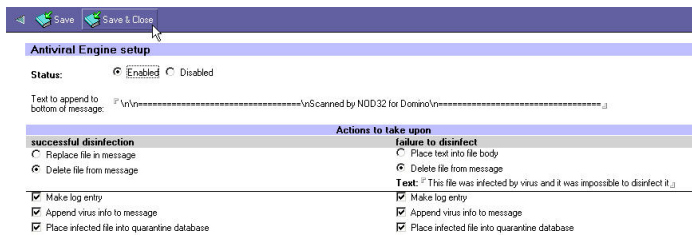
Settings

- **Status (Enabled/Disabled)** – enables/disables the filter
- **Description** – name of the filter

Filter settings

- **From contains** – filters by sender

(img. 8)



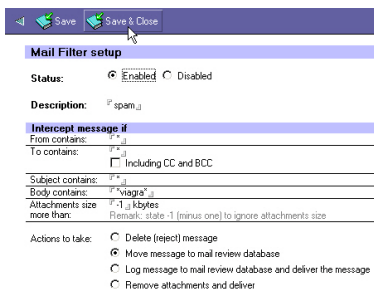
- **To contains** – filters by addressee
- **Subject contains** – filters by subject
- **Body contains** – filters by text in the e-mail body
- **Attachments size** – filters by the size of attachment
- **Action to take** – actions applicable to e-mail messages

- **Delete (reject) message** – deletes filtered messages
- **Move message to mail review database** – moves messages to the review database
- **Log Message to mail review database and deliver the message** – delivers messages to their addressees and places a copy of the messages to the review database
- **Remove attachments and deliver** – deletes attachments and delivers messages subsequently

Strings used for filtering email must commence and end with an asterisk (e.g. *viagra*). Wildcards can also be used. A question mark (?) substitutes any one character, while an asterisk (*) substitutes zero or more arbitrary characters. Use a semicolon (;) to delimit multiple strings, if necessary.

Example:

To filter out email from the hotmail.com and yahoo.com domains, enter ****@hotmail.com**;******@yahoo.com**** to the „From contains“ field.



4. Log, Mail Review and Quarantine database maintenance

AMFE Log Database

AMFE Log	By Date	By Virus Info
<ul style="list-style-type: none"> 11/16/2005 <ul style="list-style-type: none"> 01:43:05 PM admin@domino07 a variant of Win32/Dialer.Q trojan 01:43:04 PM admin@domino07 a variant of Win32/TracerDownloader.Agent.BQ trojan 01:43:03 PM admin@domino07 probably unknown Win32 virus 01:43:03 PM admin@domino07 a variant of Win32/Dialer.Look2Me application 01:42:48 PM admin@domino07 a variant of Win32/Dialer.HZ trojan 01:40:41 PM admin@domino07 multiple infections 01:40:41 PM admin@domino07 Virus32/Mydoom.A worm 01:40:41 PM admin@domino07 Virus32/Mydoom.A worm 01:40:41 PM admin@domino07 multiple infections 11/15/2005 11/14/2005 		

contains a review of all infected e-mails detected. The database also provides information about the time an incident occurred, the name of the threat as well as the recipient. The information in the database can be sorted by date or the name of the threats. To enable database logging, select *Make log entry*, which is located in the *Mail Filter setup*.

Quarantine Database

AMFE Log	By Virus Info
<ul style="list-style-type: none"> a variant of Win32/Adware.Look2Me application 11/16/2005 01:43:03 PM admin@domino07 a variant of Win32/Dialer.HZ trojan 11/16/2005 01:42:48 PM admin@domino07 a variant of Win32/Dialer.Q trojan 11/16/2005 01:43:05 PM admin@domino07 a variant of Win32/TrojanDownloader.Agent.BQ trojan 11/16/2005 01:43:04 PM admin@domino07 	

the Quarantine database keeps track of all infected files detected. If needed, the files can be recovered. As in the previous case, items in quarantine can be arranged by date or name of infiltration. To store infected files in quarantine, select *Place infected file into quarantine database*, found in the *Mail Filter Setup*.

Mail Review Database

AMFE Mail Review	Deliver	From	To
<ul style="list-style-type: none"> 11/16/2005 <ul style="list-style-type: none"> 02:20:32 PM admin@domino07 kocci@domino07@domino07 02:11:09 PM admin@domino07 zernan@domino07@domino07 02:05:50 PM admin@domino07 kocci@domino07@domino07 02:04:49 PM admin@domino07 kocci@domino07@domino07 			

contains all e-mails that have been filtered. Messages are divided into 'delivered' and 'undelivered'. E-mail messages delivered to their respective addressees are indicated by this icon (when displaying all messages).

Undelivered e-mails can be sent back to their addressees
– to do so, select messages and click on the *Deliver* button.