

Quick Start Guide

This *Quick Start Guide* provides an overview for installing and configuring Webroot® SME Security. For more detailed instructions, see the *System Administrator Guide*.

Planning the Installation

Before you begin installing Webroot SME Security, review the guidelines in this section.

Upgrade Support

If your company is currently running Webroot Spy Sweeper Enterprise 3.1 and a supported MS SQL database (2000, 2005, or 2005 Express), you can upgrade to Webroot SME Security 3.1.5. However, if your company is running a version of Webroot Spy Sweeper Enterprise prior to 3.1 or a DBISAM database, see the following table for upgrade information. Also, if you are running older versions of the Spy Sweeper Clients, most of them are still supported, except for version 2.1.

If Your Company is Running ...	Follow These Steps ...
Webroot Spy Sweeper Enterprise 3.0 or lower	You <i>must</i> upgrade to Webroot Spy Sweeper Enterprise 3.1 before you can install Webroot SME Security 3.1.5. Contact your Webroot Sales representative or Webroot Support for more information.
DBISAM database	The DBISAM database is no longer supported. See the <i>System Administrator Guide</i> for instructions.
Webroot Spy Sweeper Clients 2.5.1, 3.0, or 3.1	These previous versions of the Client are supported for older operating systems. You do not need to upgrade these clients unless you want to do so.
Webroot Spy Sweeper Client 2.1	This version is no longer supported. You must upgrade to the new Webroot Client or to one of the versions listed above.

Webroot Component Requirements

Before installing Webroot SME Security, review the requirements for the main components: Webroot Server, Webroot Clients, and Distributors. (If your internal network is complex or uses proxy servers, or if you run firewall programs at the desktop or server level, see Appendix A of the *System Administrator Guide*.)

Webroot Server Requirements	
Operating system:	Windows 2000 Pro or Server with SP 4 <i>or</i> Windows XP Pro with SP 2 (see the <i>System Administrator Guide</i> for important notes) <i>or</i> Windows 2003 Standard, Enterprise, R2, or Small Business Server with SP1
CPU:	1 GHz minimum
Memory:	1 GB minimum
Disk space:	1 GB minimum
Database support:	Microsoft SQL Server 2005 Express Edition (English language; free download) <i>or</i> Microsoft SQL Server 2000 or 2005

Webroot Server Requirements (Continued)	
Browser:	Internet Explorer 6.0 SP1 or later
Network requirements:	<p>The Webroot Server components require the following network access:</p> <p>Client Service (WebrootClientService.exe):</p> <ul style="list-style-type: none"> Requires local network access. <p>Update Service (WebrootUpdateService.exe):</p> <ul style="list-style-type: none"> Requires local network and Internet access. Requires outbound access for HTTPS requests on port 443 for your company server. <p>Admin Console (WebrootAdminConsole.exe):</p> <ul style="list-style-type: none"> Requires local network access. Requires use of port 50003 on your server, by default. The Distributor Service on your server uses the same port. Secure Sockets Layer (SSL) access requires use of port 50023.

Webroot Client Requirements	
Operating system:	Windows 2000 Pro or Server <i>or</i> Windows XP Home, Professional, or Tablet <i>or</i> Windows 2003 Standard, Enterprise, or Small Business Server
CPU:	1 GHz minimum
Memory:	128 MB RAM minimum; 256 MB RAM or more recommended
Disk space:	100 MB free space
Browser:	Internet Explorer 6.0 SP1 or later
Network requirements:	<p>The Webroot Client components require the following network access:</p> <p>CommAgent™ (CommAgent.exe):</p> <ul style="list-style-type: none"> Requires local network access. Requires use of ports 50001 and 50002 on the client workstation. <p>Webroot Client (SpySweeperUI.exe):</p> <ul style="list-style-type: none"> <i>No network access requirements.</i> <p>Spy Sweeper Engine (SPYSWEEPER.exe):</p> <ul style="list-style-type: none"> Requires local network or Internet access, depending on which is needed to access the company server.

Webroot Distributor Requirements*	
Operating system:	Windows 2000 Pro or Server with SP 4 <i>or</i> Windows XP Pro with SP 2 <i>or</i> Windows 2003 Standard, Enterprise, or Small Business Server with SP1
CPU:	1 GHz minimum
Memory:	1 GB minimum
Disk space:	1 GB minimum
Network requirements	<p>Distributor Service (WebrootUpdateDistributor.exe):</p> <ul style="list-style-type: none"> Requires local network access. Requires use of port 50003 on your server. The Admin Console service on your company server uses the same port.

* This Distributor Service can be installed on additional servers to manage clients in different geographical locations. For more information about deploying multiple distributors, see the *System Administrator Guide*.

Installing Components

Follow these steps to install the SQL database, the Webroot Server, Webroot Clients, and the Distributor.

Configuring a SQL Server Database

As a first step, you must install and configure either a SQL Server or SQL Server Express database. (Do not use the SQL Server Express version if you have a large number of distributors. For more information, see the *System Administrator Guide*.) See the following table for important database installation notes.

Database	Installation Notes
Microsoft SQL Server 2000 or 2005	<p>If you are using SQL Server 2000 or 2005 for your database, you must create the database before installing the Webroot Server. Make sure you have the user name and password available before installing the Webroot Server. In addition, you may also want to create a system data source name (DSN) if you experience problems connecting to the database.</p> <p>When you install the Webroot Server, the installer attempts to enable TCP/IP access and the correct authentication mode (mixed mode). If you have problems with the database configuration, refer to Webroot's Knowledge Base available from: http://webrootenterprise.supportportal.com/Portal/Home.aspx</p>
Microsoft SQL Server 2005 Express Edition (free download)	<p>If you are using SQL Server 2005 Express for your database, you can either install it in advance or link to it from the Webroot SME Security installer to download and install it from there. You must also install Microsoft .NET Framework 2.0, which can also be accessed from the Webroot Server installer.</p> <p>During the database installation, make sure you select Mixed Mode for the authentication mode.</p>

If you have an existing Webroot Spy Sweeper Enterprise 3.1 installation and a DBISAM database, see the *System Administrator Guide* for instructions. The DBISAM database is no longer supported.

Installing and Configuring the Webroot Server

Follow these instructions to install the following Server executables:

- **Client Service.** Controls communications between the Webroot Server and Webroot Clients.
- **Update Service.** Controls updates from the Webroot Update Server.
- **Admin Console.** Provides a user interface for administering Webroot SME Security.

(When installing the Webroot Server on Windows Server 2003 Service Pack 1, you may receive various errors and the installation may fail. To resolve installation problems see the *System Administrator's Guide*.)

The following table provides important information required during Webroot Server installation.

Required Information for Webroot Server Installation	
Database Connection	<p>In the Database Connection Information screen, you must enter the following information about your SQL database:</p> <ul style="list-style-type: none">• SQL Server Name• Instance Name• Database Name• SQL User Name• Password <p>You will use either MS SQL Server or SQL Server Express. You need the above information regardless of which version of MS SQL Server you are using.</p>
Keycode	<p>In the Company Information screen, you must enter your unique Key Code. If you purchased Webroot SME Security through a sales representative or online, you received your Key Code in an e-mail message. You can copy the Key Code from the message and paste it in. If you purchased Webroot SME Security from a store or received it already installed on your new computer, the Key Code is on the product packaging.</p>

Required Information for Webroot Server Installation (Continued)	
User Name and Password	In the Default Admin Account screen, you will create a user name and password to access the Admin Console. Make sure you write down this name and password and keep it somewhere safe.
Proxy Server	If you use a proxy server to access the Internet, you must enter your proxy server name or IP address and the port number in the Proxy Settings screen. If your proxy server requires authentication, you must enter the server's user name and password.
Email Settings	In the Email Settings screen, you can enter the following information for e-mail notifications: <ul style="list-style-type: none"> • Host name: fully qualified domain name for your e-mail server (SMTP server) used for outgoing mail. • From address: the e-mail address that notification messages will come from. • SMTP login: the user name and password (if your SMTP server requires a login).
Client Services	In the Server Settings screen, you must specify the IP address or host name that the client workstations will use to communicate with your company server. For IP resolution, use the IP address of the network interface card (NIC) visible to client workstations. For host name resolution, select or enter the fully qualified domain name of your server (requires a properly configured DNS environment). You must also specify the port on your company server that the Client Service will use to communicate with your client workstations. The default port is 50000. Be sure that the port you use is not used by another process.
Service Credentials	In the Service Credentials screen, you can enter a user name and password for your domain, which is necessary if you want to install the Webroot Client on workstations from the Admin Console.

To install the Webroot Server components:

1. Log into the system with Administrative rights.
2. Make sure all Windows programs are closed.
3. Start the installation program, as described in the following table.

To install from a CD:	To install from a downloaded file:
<ol style="list-style-type: none"> 1. Insert the CD into your CD drive. If the installation options do not display automatically, use Windows Explorer to navigate to your CD drive. Then double-click WebrootServerSetup.exe to start the installation. 2. Click Install Webroot SME Security to start the installation and display the Welcome window. 	<ol style="list-style-type: none"> 1. Follow the instructions on the Web site to download the WebrootServerSetup.exe file. 2. Go to where you downloaded the file. If you downloaded the file to your Windows Desktop, you will see an icon on your desktop. If you downloaded the file to a different location, use Windows Explorer to navigate to the file. 3. Double-click WebrootServerSetup.exe to start the installation and display the Welcome window.

4. At the Welcome screen, click **Next**.
The License Agreement window opens.
5. Read the license agreement and select the I Accept the License Agreement option if you agree with the content.

If you want to print the license agreement, click **Print**.
The Installation Checklist window opens.
6. Make sure that you have the information and that your system meets the listed system requirements. Select each item in the checklist and click **Next**.

The next screen to open depends on whether a SQL Server 2000 or 2005 database is installed, no database is installed, or a SQL Server Express database is installed.

If SQL Server 2000 or 2005 is installed:

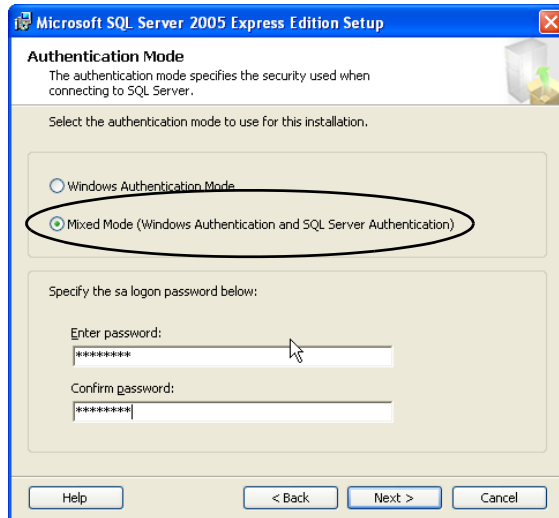
The Database Connection windows opens. Skip to step 7 for entering database connection information.

If no database is installed:

The Prerequisites window opens with links to download and install SQL Server Express and .NET 2.0. (Installing .NET 2.0 is required only if you are using SQL Server Express.) If you want to install SQL Server Express or .NET 2.0, click the links provided, download the files, and follow the installation wizards.

Be sure to remember the database name, user name, and password you set during the SQL Server Express installation. You will need this information when you continue with the installation of the Webroot Server.

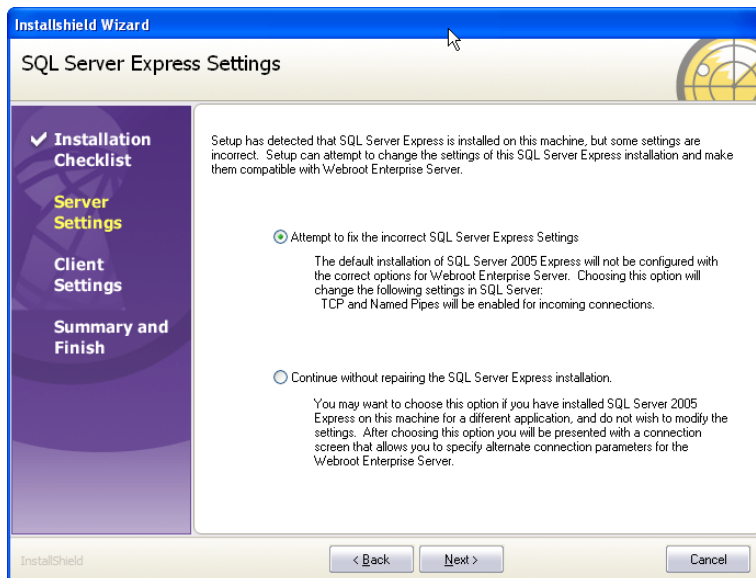
When you install SQL Server Express, you can accept all the default values during the installation. However, you must select the Mixed Mode option in the Authentication Mode window.



After you make these changes, the Database Connection window opens.

If SQL Server Express is installed:

The SQL Server Express Settings window opens, indicating that Setup has detected SQL Server Express on your system, but that some settings are incorrect.



Select the Attempt to Fix the Incorrect SQL Server Express Settings option and click **Next**.

If you select Continue without Repairing the SQL Server Express Installation option, you must change the SQL Server Express settings yourself before Webroot SME Security will work with the database. For more information, refer to the Webroot Knowledge Base available from:

<http://webrootenterprise.supportportal.com/Portal/Home.aspx>

The Database Connection window opens.

Webroot® SME Security Server - InstallShield Wizard

Database Connection

Installation Checklist

Server Settings

Client Settings

Summary and Finish

Please enter the connection properties of the SQL Server you wish to use to store your data. If the database you specify does not exist, the installation will attempt to create it using the login you have specified.

SQL Server Name: JGALLAGHER.L

Instance Name: SQLEXPRESS

Database Name: webroot

SQL User Name: sa

Password:

< Back Next > Cancel

7. In the Database Connection window, verify that the database information is correct, enter the password, and click **Next**.

SQL Server Name:	Name of the server that is running MS SQL Server or SQL Server Express.
Instance Name:	For SQL Server Express, enter the name of the instance that you defined for Webroot SME Security data. For MS SQL Server, leave this field blank unless you know the SQL Server instance you want to use.
Database Name:	Name of the database you defined for Webroot SME Security data.
SQL User Name:	User name you defined for the Webroot SME Security database in SQL Server or SQL Server Express.
Password:	Password you defined for the Webroot SME Security database in SQL Server or SQL Server Express.

The Company Information window opens.

Webroot® SME Security Server - InstallShield Wizard

Company Information

✓ Installation Checklist

Server Settings

Client Settings

Summary and Finish

Please enter your user and company name. This name is used to identify your installation when your server looks for updates from the Webroot Update Server.

Registered User:

Company Name:

Please enter your keycode. You received your keycode in an email message at the time of purchase from your sales representative or from the Webroot website. Please copy and paste the entire keycode including the braces.

KeyCode:

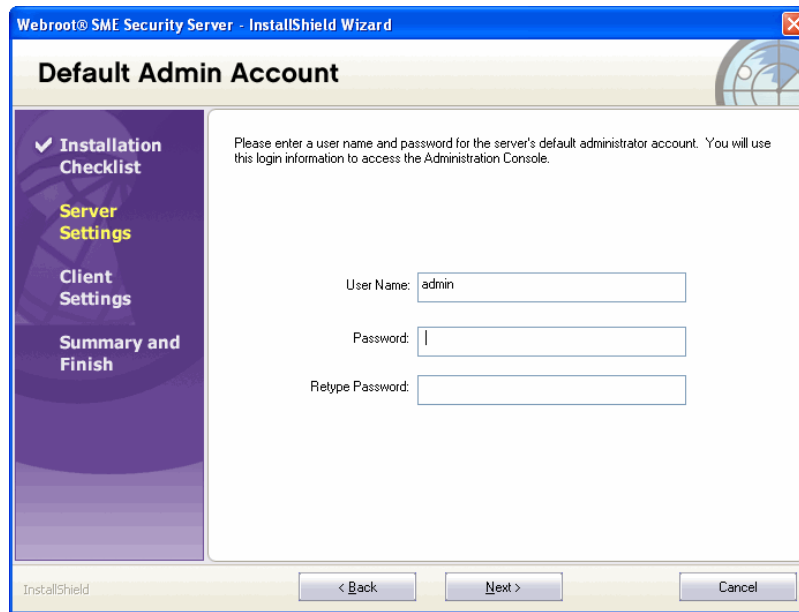
InstallShield

< Back Next > Cancel

8. In the Company Information window, enter the registration and Key Code information and click **Next**.

Registered User:	Name of the person who will be the registered user of Webroot SME Security and the Admin Console.
Company Name:	Name of your company.
Keycode:	Unique code that identifies the rights and privileges associated with your installation, such as the number of licenses you have purchased. If you purchased Webroot SME Security through a sales representative or online, you received your Key Code in an e-mail message. You can copy the Key Code from the message and paste it in. If you purchased Webroot SME Security from a store or received it already installed on your computer, the Key Code is on the product packaging. Be sure to include the braces.

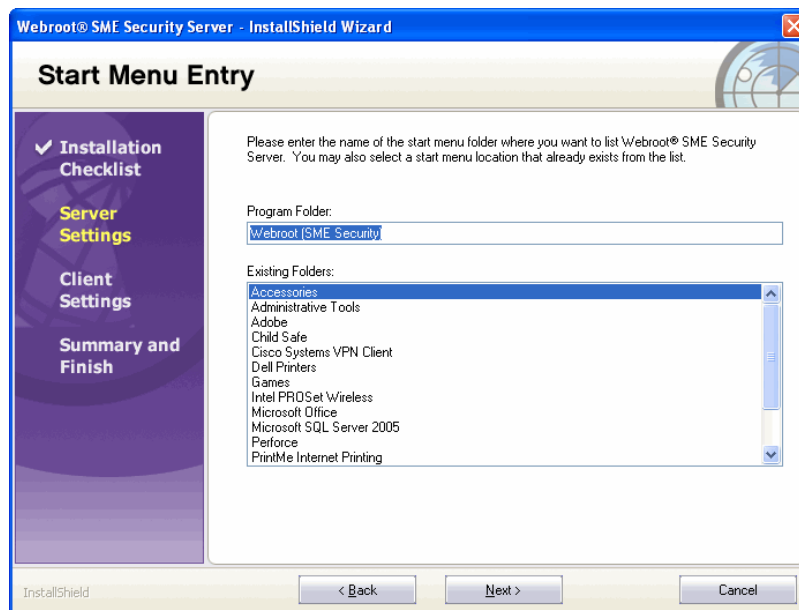
The Default Admin Account window opens.



9. In the Default Admin Account window, enter a user name and password, then click **Next**. Be sure to write down your user name and password. You must remember this name and password to access the Admin Console.

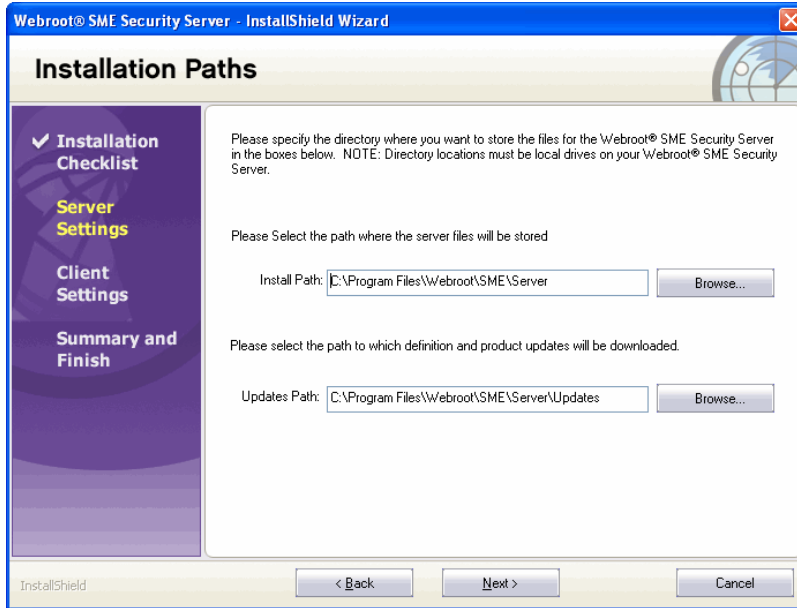
User Name:	Login name to access the Admin Console.
Password:	Password for the login.
Retype Password:	

The Start Menu Entry window opens and shows the default Start menu folder.



10. If you want to use the default folder, click **Next**. If you want to use a different Start menu folder, enter a new name or select an existing folder.

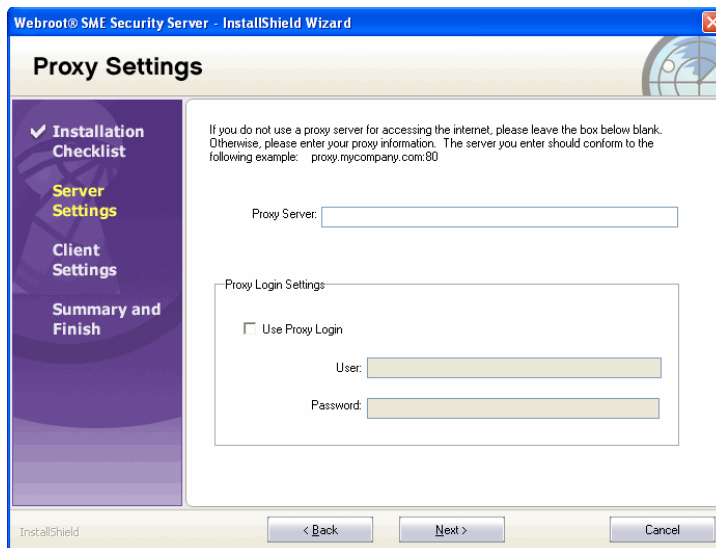
The Installation Paths window opens and shows you the default locations for installing the components and for product updates and spyware/virus definitions.



11. If you want to keep the default locations, click **Next**. Otherwise, select or enter new locations. Both paths must refer to local disks that are physically on the server. Network disks are not supported.

Install Path:	If you want to install the Webroot Server to a different folder, enter the path or click Browse to navigate to the folder you want.
Updates Path:	If you want to download Webroot Server updates to a different folder, enter the path or click Browse to navigate to the folder you want. You cannot change this folder after installation.

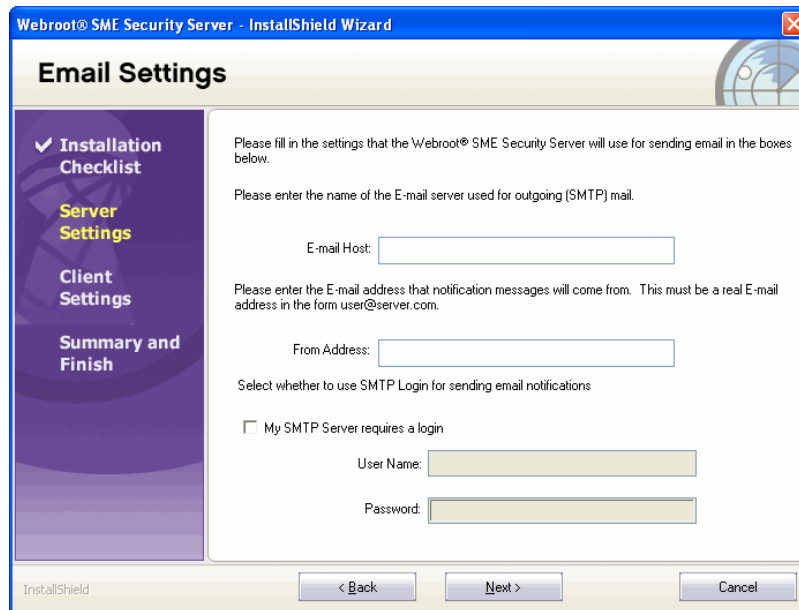
The Proxy Settings window opens.



12. If you do not use a proxy server to access the Internet, click **Next** to skip this screen. If you will use a proxy server to access the Internet, enter the information in the fields.

Proxy Server:	Enter the proxy server name or IP address and port number in one of the following formats: <i>server_name.company.com:80</i> or <i>10.0.0.1:80</i> .
Use Proxy Login:	If you use a proxy server that requires authentication, select the Use Proxy Login option.
User:	Enter your user name and password in the fields.
Password:	

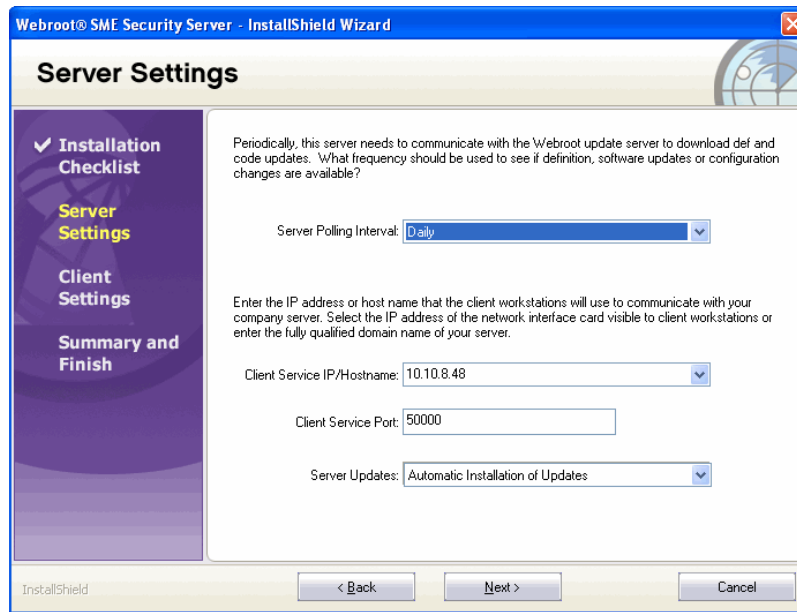
The E-mail Settings window opens.



13. In the Email Settings window, enter or select the information and click **Next**. If desired, you can edit these settings later in the Admin Console.

E-mail Host:	Fully qualified domain name for your e-mail server used for outgoing mail (SMTP server). If you do not have this information, enter NA and edit the information from the Admin Console.
From Address:	E-mail address that notification messages will come from. Must be a real e-mail address in the format: <i>tom@webroot.com</i> .
My SMTP Server Requires a Login	If you use a secure SMTP e-mail server, select this option. Enter the user name and password in the fields.
User Name:	Note: Webroot SME Security only supports Auth-Login.
Password for SMTP:	

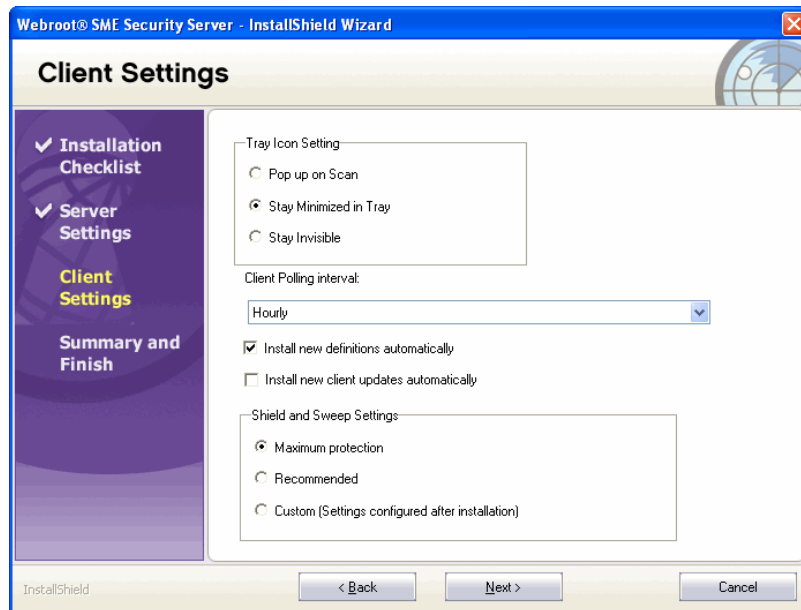
The Server Settings window opens.



- In the Server Settings window, verify or enter new information and click **Next**. If desired, you can edit these settings later in the Admin Console.

Server Polling Interval:	Select how often you want the Webroot Server to check the Webroot Update Server for new spyware/virus definitions and software updates.
Client Service IP/Host Name:	Select or enter the IP address or host name that the client workstations will use to communicate with your company server. For IP resolution, use the IP address of the network interface card (NIC) visible to client workstations. For host name resolution, select or enter the fully qualified domain name of your server (requires a properly configured DNS environment).
Client Service Port:	Enter the port on your company server that the Client Service will use to communicate with your client workstations. The default port is 50000. Be sure that the port you enter is not used to communicate with another system.
Server Updates:	Select how you want to handle updates to your Webroot Server installation, including the Admin Console: <ul style="list-style-type: none"> Automatic Installation of Updates: Automatically updates your Server installation whenever updates are available. Manual Installation of Updates: Requires you to manually install Server updates when they are available.

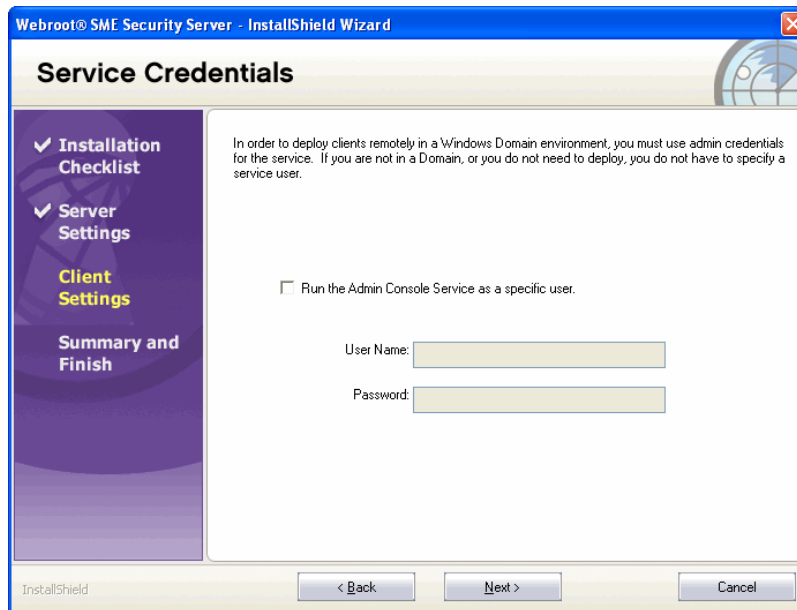
The Client Settings window opens.



15. In the Client Settings window, select the desired information and click **Next**. If desired, you can edit these settings later in the Admin Console.

Tray Icon Setting:	<p>Select how you want the Webroot Client to appear on client workstations.</p> <ul style="list-style-type: none"> • Pop up on Scan: Displays a tray icon that client users can double-click to display the Webroot Client window and automatically pops up the window whenever a sweep starts, whether scheduled or using Sweep Now. • Stay Minimized in Tray: Default and recommended setting. Displays a system tray icon that client users can double-click to display the Webroot Client, but does <i>not</i> pop up the window whenever a sweep starts. From this interface, end users can start their own sweeps and adjust any allowable settings. • Stay Invisible: Does not display a system tray icon and does not do anything when a sweep starts. End users have <i>no</i> access to the Webroot Client window.
Client Polling Interval:	Select how often you want Webroot Clients to check for updates and for schedule and configuration changes from your server.
Install new definitions automatically	Select to have spyware and virus definitions installed automatically on all client workstations whenever updates are available.
Install new client updates automatically	Select to have Webroot Client program updates installed automatically on all client workstations whenever updates are available.
Shield and Sweep Settings:	<p>Select the desired settings:</p> <ul style="list-style-type: none"> • Maximum protection: Turns on all shields and sweeps weekly at 12 am Saturday. • Recommended: Turns on all Windows System and Internet Explorer shields to protect workstations from unauthorized changes. • Custom: No settings will be configured at this time.

The Service Credentials window opens.



16. If you want to install the Webroot Clients from the Admin Console, select the “Run ...” option, enter a user name and password for your domain, and click **Next**. If you do not need to install Webroot Clients from the Admin Console (see [“Using Alternate Methods to Install Webroot Clients”](#) on page 19), leave the option blank and click **Next**.

The Summary window opens and shows the current settings.

17. Click **Next**.

The Webroot Server installs and automatically starts the Client Service and Update Service. These services (WebrootClientService.exe and WebrootUpdateService.exe) run as Windows services and should always be running. This permits your company server to download updates from the Webroot Update Server and permits client workstations to download updates and configuration changes from your company server.

18. Click **Finish**.

You are now ready to configure one or more client workstations, and if needed, one or more distributor servers. For more information, see [“Installing and Configuring the Webroot Client”](#) on page 14 and [“Installing and Assigning Distributor Servers”](#) on page 21.

Installing and Configuring the Webroot Client

The Webroot Client configuration installs the following components on each client workstation:

- **CommAgent.** Communicates periodically with your company server to check for configuration changes, new or updated applications, or updated threat definitions.
- **Webroot Client.** Detects viruses and potentially unwanted programs, such as spyware. Also provides access to options for workstation users.
- **Spy Sweeper Engine.** Provides the core functions for Webroot SME Security.

Determine the best method for installing the Webroot Client as described below:

Method	Description
Admin Console	Configure the logon properties for the Webroot Admin Console Service, access the Admin Console, then install the Webroot Clients on workstations from the Admin Console. See the next section, “Using the Admin Console to Install Webroot Clients.”
MSI file	Go to each workstation and manually execute the installation files. See “Using the MSI File” on page 19.
Logon script	Use the example logon scripts provided by Webroot. See “Using a Logon Script” on page 20.
Group Policies	If you use Active Directory, you can use Group Policies. See “Using Group Policies” on page 20.
Image of Webroot Client	Include the Webroot Client as part of an image installed on each workstation. See “Using an Image File” on page 20.

Using the Admin Console to Install Webroot Clients

You can install and update the Webroot Clients from the Admin Console, which requires that you complete the following tasks:

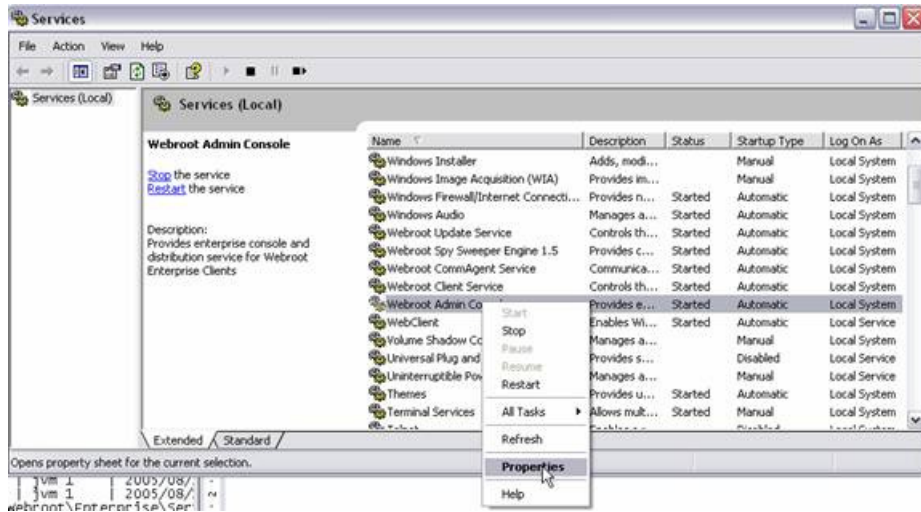
- Configure the logon properties for the Webroot Admin Console Service.
- Access the Admin Console.
- Install the Webroot Clients.

Configuring Logon Properties for Webroot Admin Console Service

To use the client deployment feature of the Admin Console, you must first properly credential the Webroot Admin Console Service from the Services control panel in Windows. The user account that you specify must have administrative privileges in the domains where you want to remotely install and uninstall the Webroot Client.

To configure the logon properties:

1. From the Start menu, select **Control Panel**.
2. Access **Services** from Administrative Tools.
3. Right-click the Webroot Admin Console Service and select **Properties**.



4. Click the **Log On** tab.



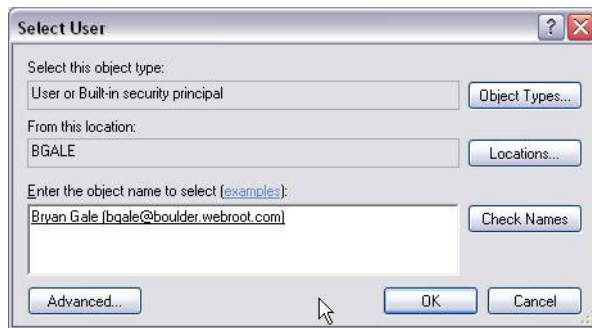
5. Select **This account**.
6. Click **Browse**.
7. Enter the domain name and partial user name using the following format:
DomainName\PartialUserName.
The user name must be a domain administrator.
8. Click **Check Names**.



9. If multiple user names display, select the correct user name and click **OK**.



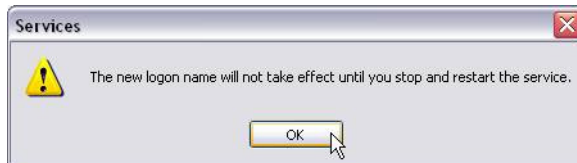
10. Click **OK** again.



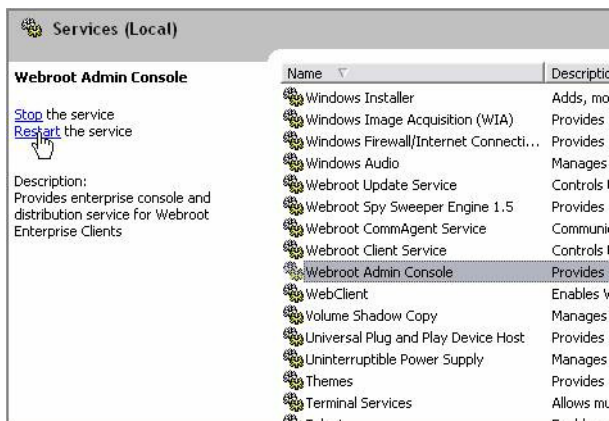
11. Highlight the password field and enter the correct password for the user in both the Password and Confirm Password fields.
12. Click **Apply**.
13. Click **OK**.



14. Click **OK**.



15. Restart the service.



Accessing the Admin Console

To access the Admin Console, you must enter a user name and password, which you specified during Webroot Server installation. You can also access the Admin Console using an HTML Application (HTA) that installs when you install the Webroot Server.

To access the Admin Console:

1. Start Internet Explorer and enter one of the following in the Address bar:
 - If you are working from the computer where the Webroot Server is installed, enter: `http://localhost:50003/Admin`
 - If you are working from another computer on your network, enter: `http://[server_computer_name]:50003/Admin`
 - If you want to access the HTA version, select **Start > All Programs > Webroot (SME Security) > Admin Console**.

The Welcome window opens.

2. Enter your user name and password.
3. Click **Login**.

A progress bar opens and shows the status of the resources loading, then the Admin Console displays in your browser. Use the function tree to navigate in the Admin Console. Do *not* use the **Back** button in your browser.



Installing Webroot Clients

You can install and update the Webroot Clients from the Admin Console. You can also see what version each client workstation has installed and the last heartbeat.

*If your client workstations are using Windows XP SP2 and the Windows Firewall, you must configure the firewall to have certain exceptions. For more information, see the *System Administrator Guide*.*

Installing the Webroot Client from the Admin Console requires Windows networking, access to the admin share (c\$), and NetBIOS enabled on your network.

To install and update Webroot Clients from the Admin Console:

1. From the Admin Console function tree, select **Administration > Client Install/Uninstall**.

The Client Install/Uninstall panel opens with the Network View tab selected. A list of the domains or workgroups that exist on your network appear in the middle panel.

2. From the middle panel, select the domain or workgroup of the workstations.

A list of workstations appears in the far right panel.

3. Select the client workstations where you want to install the Webroot Client. You can select more than one workstation by using **Ctrl** or **Shift** as you select workstations.

If you do not see some client workstations in the Network View tab, you can click the Name/IP tab. From this panel, you can install Webroot Clients using the host name, IP address, or an IP address range.

If you are updating an existing installation, you do *not* need to uninstall the Webroot Client first.

4. Click **Refresh** or go to the Client Management panel to see the status of the installation.

Using Alternate Methods to Install Webroot Clients

You can install Webroot Client components using any of the following alternate methods:

- Execute the WebrootClientSetup.msi file from each workstation.
- Use a logon script to execute the WebrootClientSetup.msi file.
- Use Group Policies, if you use Active Directory.
- Include the Webroot Client as part of an image installed on workstations.

Using the MSI File

From each workstation, you can execute the WebrootClientSetup.msi file. Make sure that all five of the client installation files are in the same folder whenever WebrootClientSetup.msi executes:

- WebrootClientSetup.exe
- WebrootClientSetup.ini
- WebrootClientSetup.msi
- SSECleanup.exe
- SSEStart.exe

Typically, these files are in the C:\Program Files\Webroot\SME\Server\Client folder of the system where you installed Webroot Server. The WebrootClientSetup.ini file contains the IP address and port of your company server and is needed for the Webroot Client to install successfully.

The WebrootClientSetup.msi client installation program defaults to visible installation where you see a progress bar and receive feedback when the installation is complete.

You can use the following client installation options when you configure client workstations:

Client Installation Options	
Performing a silent install:	<p>If you would like to perform a silent installation, add the /q switch in the line that executes WebrootClientSetup.msi. The installation program defaults to a visible installation where you see a progress bar and receive feedback when the installation is complete. The syntax is:</p> <pre>WebrootClientSetup.msi /q</pre>
Specifying the server IP address and port:	<p>You can specify the server IP address and port in the command line instead of relying on the .ini file. The syntax is:</p> <pre>WebrootClientSetup.msi SERVERIP=10.10.10.10 SERVERPORT=50000</pre> <p>For a silent installation:</p> <pre>WebrootClientSetup.msi /q SERVERIP=10.10.10.10 SERVERPORT=50000</pre>

Client Installation Options (Continued)

Bypassing client deployment settings:	You can also bypass the client deployment settings, as described in the examples below. (If you are using the /q switch, the setting should go after it.) Pop-up on scan: RUN_CLIENT_AS=0 Stay minimized: RUN_CLIENT_AS=1 Stay invisible: RUN_CLIENT_AS=2 The syntax is: WebrootClientSetup.msi /q RUN_CLIENT_AS=1 SERVERIP=10.10.10.10 SERVERPORT=50000
---------------------------------------	--

Using a Logon Script

Use a logon script to execute the WebrootClientSetup.msi file (see also the previous table). Webroot has provided some example logon scripts that you can change to meet your needs.

Below is an example logon script. You must adjust it for your setup and network environment. You must put the script on your domain controllers or logon servers, then assign it so that it executes when a workstation logs in to your network. This script assumes that you have a shared drive on your network that contains the WebrootClientSetup.msi and WebrootClientSetup.ini files. Typically, these files are in the C:\Program Files\Webroot\SME\Server\Client folder of the system where the Webroot Server has been installed. Copy the client files to the network share of your choice, then adjust the script to match your share path. Also be sure to give all workstations read access and execute access to the share.

```
@echo off
if exist "C:\Program Files\Webroot\SME\Client\SPYSWEEPER.EXE" goto check
if not exist "C:\Program Files\Webroot\SME\Client\SPYSWEEPER.EXE" goto install
:check
if exist "C:\Program Files\Webroot\SME\Client\SpySweeperUI.exe" goto loaded
if not exist "C:\Program Files\Webroot\SME\Client\SpySweeperUI.exe" goto install
:install
echo Loading Webroot Enterprise Clients...
"C:\Program Files\Webroot\SME\Server\Client\WebrootClientSetup.msi"
goto end
:loaded
echo Webroot Enterprise Clients are already Installed
:end
```

Using Group Policies

Use Group Policies, if you use Active Directory. For more information, refer to <http://support.microsoft.com/default.aspx?kbid=314934> and <http://support.microsoft.com/?kbid=302430>.

Using an Image File

To use an image file, include the Webroot Client as part of an image installed on workstations.

- Install the Webroot Client on the target system you are intending to image. If you will be implementing multiple Admin Consoles, you need to create a separate image for clients managed under each console.
- Stop the Webroot CommAgent service.
- Remove the following registry key:
HKEY_LOCAL_MACHINE\SOFTWARE\Webroot\Enterprise\CommAgent\guid
- Create your image.

Monitoring Webroot Client Polling

Client workstations poll the company server at random intervals within 20 seconds of installation. During the first contact, the CommAgent also provides the name and MAC address of the client workstation and automatically adds the client to a default group. To view client information, go to **Administration > Client Management**. Once you configured the client workstations and they have polled the company server, you can change the groups, if needed. You can also schedule sweeps and change sweep settings based on groups. For more information, see the *System Administrator Guide*.

Installing and Assigning Distributor Servers

By default, a Distributor Service is installed with the Webroot Server and acts as a single distributor server. If your workstations are located in different geographical locations, you can install the Distributor Service on one or more of your company servers. If you do not have workstations in different locations, you can skip this section.

You must complete the following tasks to install and use distributor servers:

- Install the Distributor Service software.
- Assign distributor servers.
- Change the port number distributors use.

Install the Distributor Service

This procedure installs and starts the Distributor Service (WebrootUpdateDistributor.exe). By default, a distributor server listens to port 50003.

If you need to change a distributor server to listen on a different port, you can do so. However, the port on each distributor server must be the same as the port used on the company server for the Distributor Service. For information on changing the local distributor port on the company server, see [“Changing the Port Distributor Servers Used”](#) on page 23. The Admin Console Service on your company server also uses the same port.

For installation options, see the following table.

Distributor Installation Options	
Performing a silent install (or uninstall):	<p>If you would like to perform a silent installation, add the /qn switch in the line that executes WebrootDistributorSetup.msi:</p> <pre>WebrootDistributorSetup.msi /qn</pre> <p>The installation program defaults to a visible installation where you see a progress bar and receive feedback when the installation is complete.</p> <p>Or, if you are using the WebrootDistributorSetup.exe file, add the following:</p> <pre>WebrootDistributorSetup.exe /s /v" /qn"</pre> <p>If necessary, you can perform a silent <i>uninstall</i> by executing one of the following:</p> <pre>WebrootDistributorSetup.msi /qn REMOVE="ALL"</pre> <pre>WebrootDistributorSetup.exe /s /v" /qn" REMOVE="\ALL\""</pre>
Specifying a folder:	<p>You can specify the folder where you install the Distributor, as follows:</p> <pre>WebrootDistributorSetup.msi INSTALLDIR="<i><drive></i>:\<i><folder></i>\"</pre> <p><i>or</i></p> <pre>WebrootDistributorSetup.exe /v"INSTALLDIR="\ <i><drive></i>:\<i><folder></i>\"</pre>
Enabling logging:	<p>To enable logging when using the MSI file (“no logging” is the default), use the following syntax:</p> <pre>WebrootDistributorSetup.msi /qn INSTALLDIR="<i><drive></i>:\<i><folder></i>\" /l*v "<i><drive></i>:\<i><folder></i>\name.log"</pre>

To install the Distributor Service:

1. On the system where you installed the Webroot Server, access the following folder:
\\Program Files\Webroot\SME\Server\Distributor.

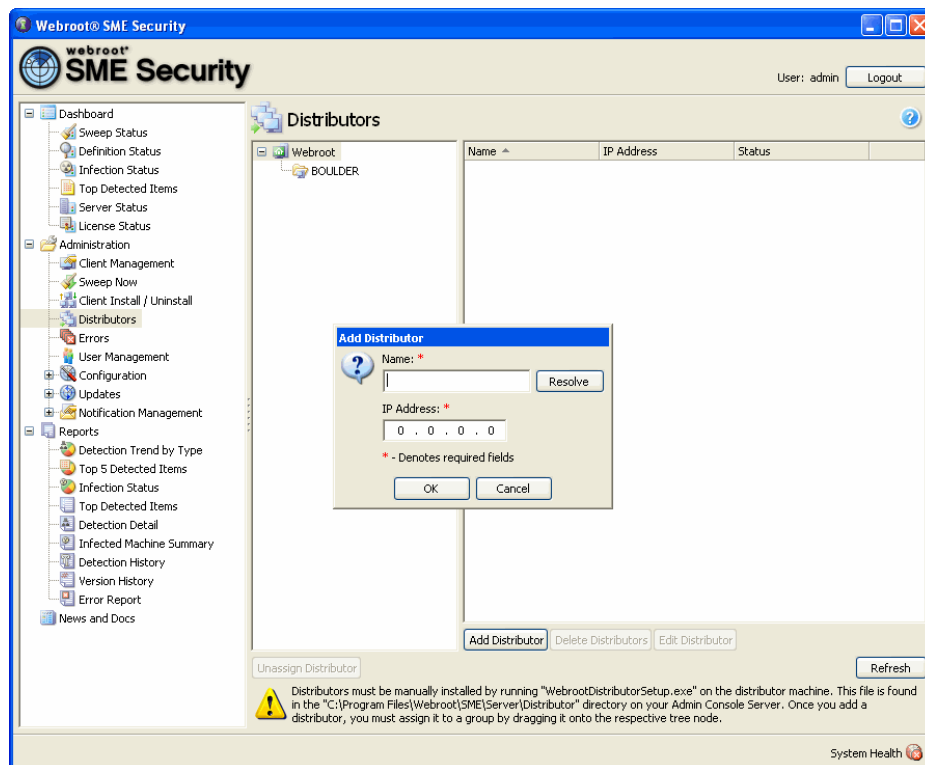
This is the default folder where the WebrootDistributorSetup files are installed. If you installed them to a different directory, access that directory instead.
2. Copy the files in this folder to the server you want to act as a distributor.
3. Execute the WebrootDistributorSetup.exe file.
4. Follow the on-screen instructions.
5. Continue with the instructions in the next section for assigning distributor servers.

Assigning Distributor Servers

After you install Distributor Services, you must assign their servers to client groups. By default, each client workstation is added to a default group named after the domain or workgroup the client workstation is in. You can assign a distributor server to one or more groups or to the whole company. For example, if you install four distributor servers and assign them all to the whole company, the system randomly selects the order of distributors it sends back to the client workstations. This process spreads the load across the servers to ensure that the servers are not overwhelmed with update requests. Distributor servers also can control bandwidth use over a WAN by localizing the Webroot Client definition and update downloads.

To assign a distributor server:

1. From the Admin Console function tree, select **Administration > Distributors**.
The Distributors panel opens with a list of all existing groups in the group tree (middle panel).
2. Click **Add Distributor**.
The Add Distributor window opens.



3. Enter a name for the distributor server.
If you enter the DNS name of a server on your network, the IP address automatically populates when you tab to the second field.
4. If necessary, enter the IP address of the server.
5. Click **OK**.
The server name now displays in the list on the right side of the panel.
6. Drag a server from the list to a group or to the company in the group tree.
To remove a server assignment, select the server in the group tree and click **Unassign Distributor**. To remove the selected distributors from their assignments and from the list of distributors, click **Delete Distributors**.
To update the status of the distributors, click **Refresh**.

Your company server will automatically send copies of all updates to all distributors. You still need to assign updates manually (from **Administration > Updates > Manual Install**) or set automatic installation rules (from **Administration > Updates > Auto Install**) to determine which updates should be applied to which groups. For more information, see the *System Administrator Guide*.

Changing the Port Distributor Servers Used

The company server uses the same port (50003 by default) for both the Distributor Service and Admin Console Service. The distributor servers that you configured must use the same port for the Distributor Service.

If you need to change this port, complete the following tasks:

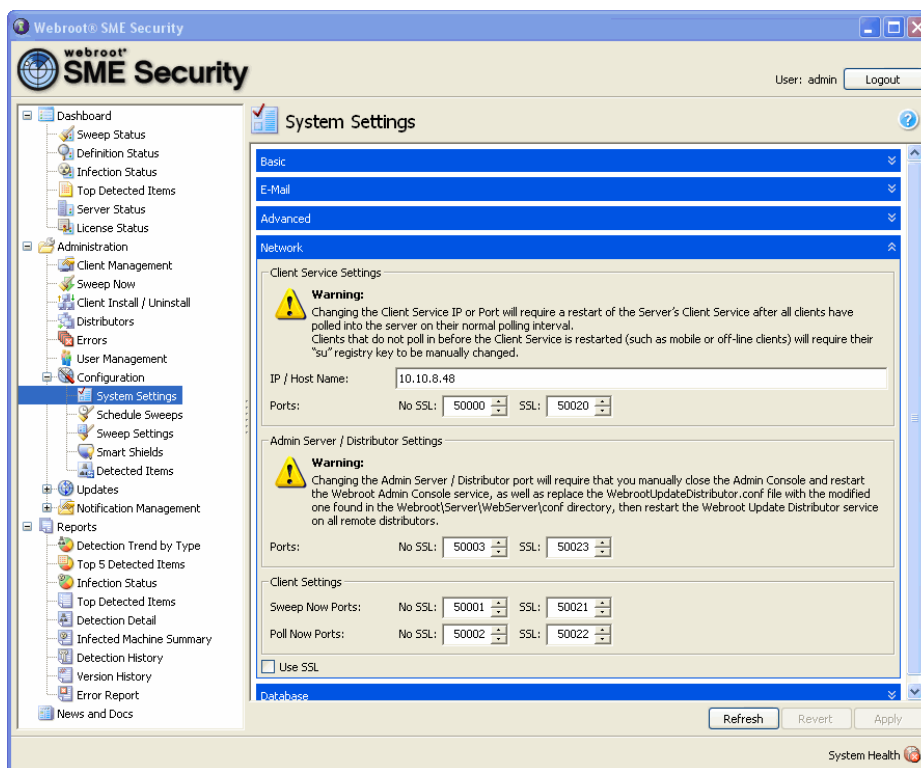
1. Change the Distributor Service port on the company server.
2. Change the Distributor Service port on each distributor server.

Changing the Distributor Service Port on the Company Server

The Distributor Service on your company server uses port 50003 by default to distribute updates to your distributor servers and client workstations. Be sure that the port you use is not used to communicate with another system. The Admin Console service on your company server also uses the same port.

To change the Distributor Service port on the company server:

1. From the Admin Console function tree, select **Administration > Configuration > System Settings**.
The System Settings panel opens, with several subpanels where you can view and edit settings.
2. Click the **Network** show/hide bar.
3. Change the port under Admin Server/Distributor Settings.



4. Click **Apply**.
5. Log out of the Admin Console.
6. Restart the Webroot Admin Console Service.
7. Access the Admin Console using the new port number.
8. From the Admin Console function tree, select **Dashboard > Server Status**.

The Server Status panel opens.

9. Check that the Update Distributor port is open.

Changing the Distributor Service Port on the Distributor Server

If you change the Distributor Service port on the company server, you must also change it on each distributor service.

The paths in the following steps assume you have installed the Admin Console and the Update Distributors in the default location: “C:\Program Files\Webroot.” If you have installed any of them to a different directory, substitute the correct root in the specified path.

To change the Distributor Service port on the distributor server:

1. On the distributor server, stop the Webroot Update Distributor Service.
2. For backup purposes, rename the following file on the distributor server:
“C:\Program Files\Webroot\SME\Server\WebServer\conf\
WebrootUpdateDistributor.conf”
3. From your company server, copy the file “C:\Program Files\Webroot\SME\Server\
\WebServer \conf\WebrootUpdateDistributor.conf” to the distributor server.
4. Restart the Webroot Update Distributor Service.
5. To test that the correct port is open, open a browser and try the following URLs:

```
http://<distributor_machine_name>:<non_ssl_port>/Distributor/servlet/  
UpdateReplicator
```

```
https://<distributor_machine_name>:<ssl_port>/Distributor/servlet/  
UpdateReplicator
```

You should get an empty page as a response.

Trying the same URLs with the incorrect port yields a failure to connect to server error, which will be treated in various ways by your browser, such as navigating to a search page.

Configuration and Operation Checklist

The following checklist provides an overview for configuring and using Webroot SME Security.

Step	For More Information ...
Check system settings, notification settings, and Webroot Client groups for easier administration.	See Chapter 3 of the <i>System Administrator Guide</i> .
Configure sweep settings and Smart Shields and run initial sweeps on clients.	See Chapter 4 of the <i>System Administrator Guide</i> .
View the dashboard status for any detected threats and view news from Webroot.	See Chapter 5 of the <i>System Administrator Guide</i> .

